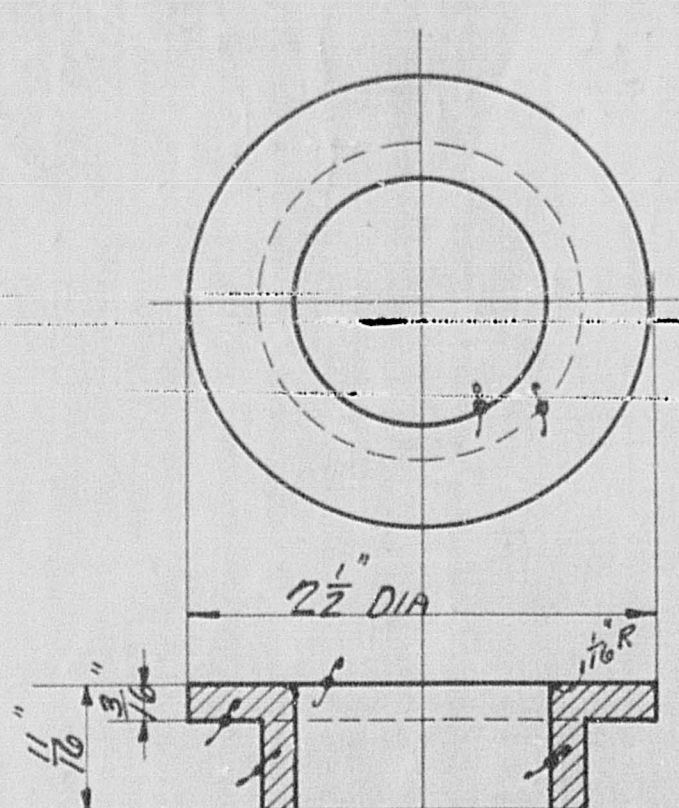
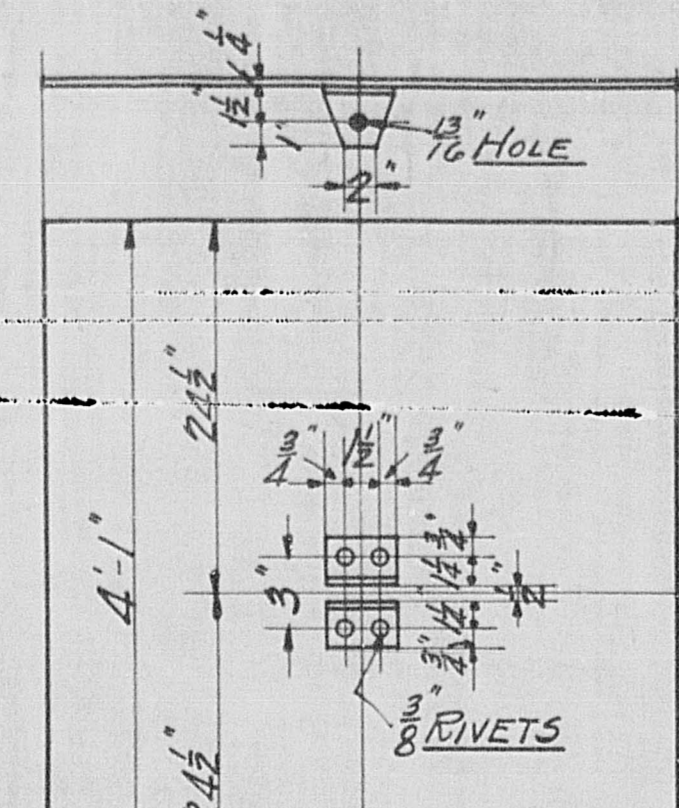


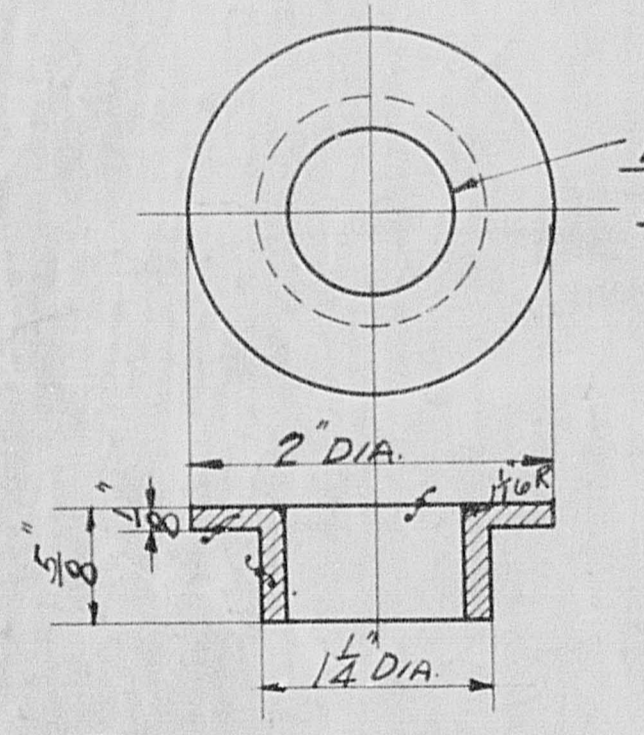
BUSHING - BRASS
1-REQD PATT. CB-492



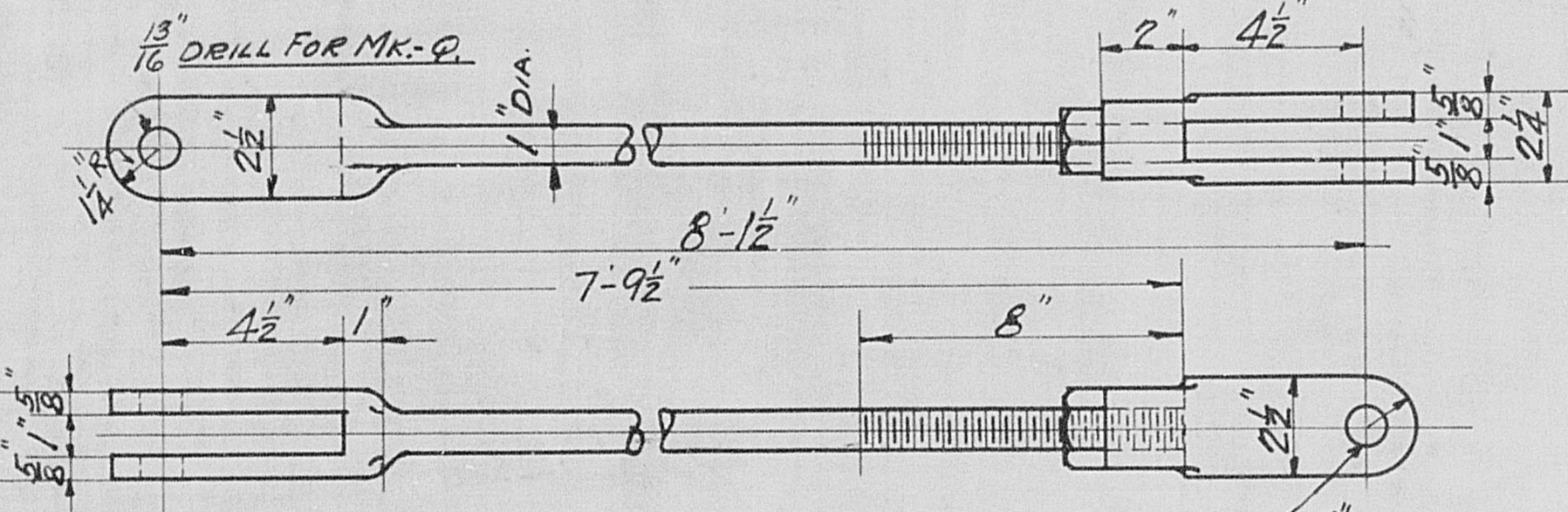
BUSHING - BRASS
1-REQD PATT. CB-493



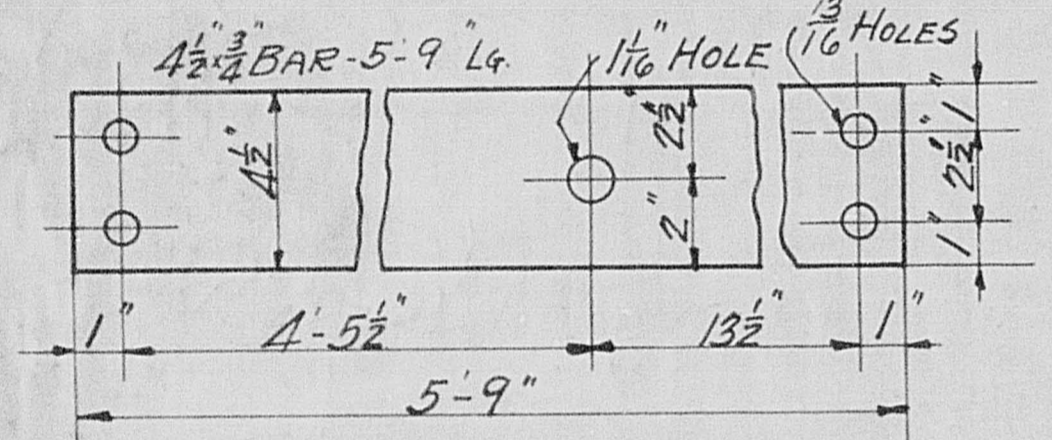
AIR VALVE COVER - STEEL
2-REQD MARK-L



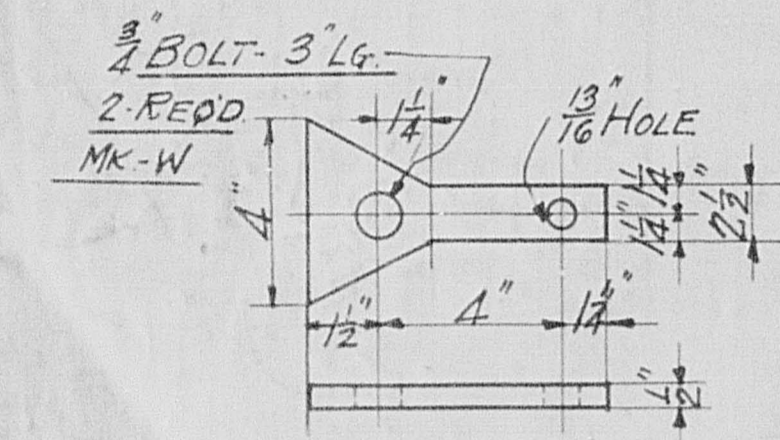
BUSHING - BRASS
1-REQD PATT. CB-492-MKA



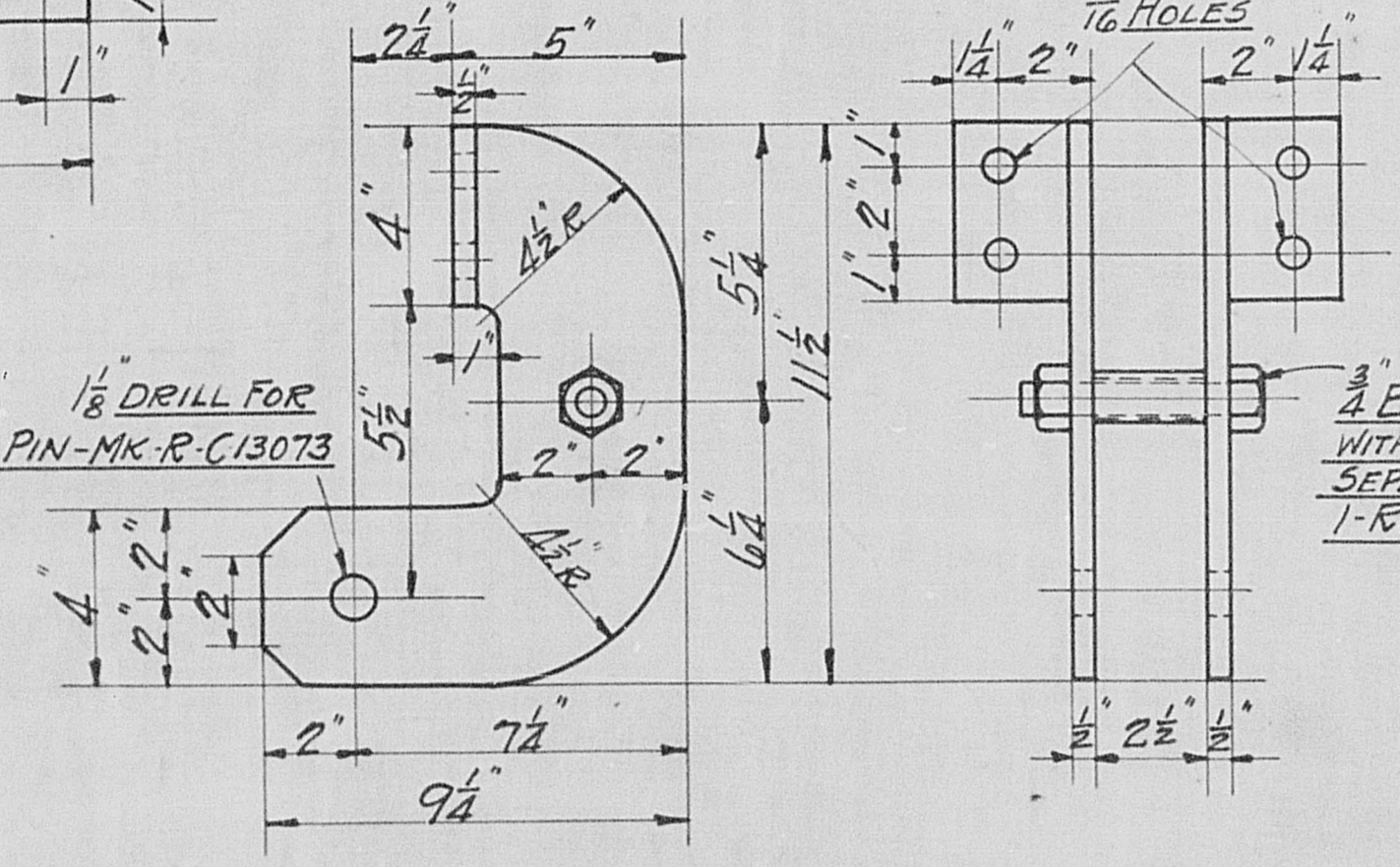
CONN. ROD - STEEL
1-REQD COMPLETE MARK-P



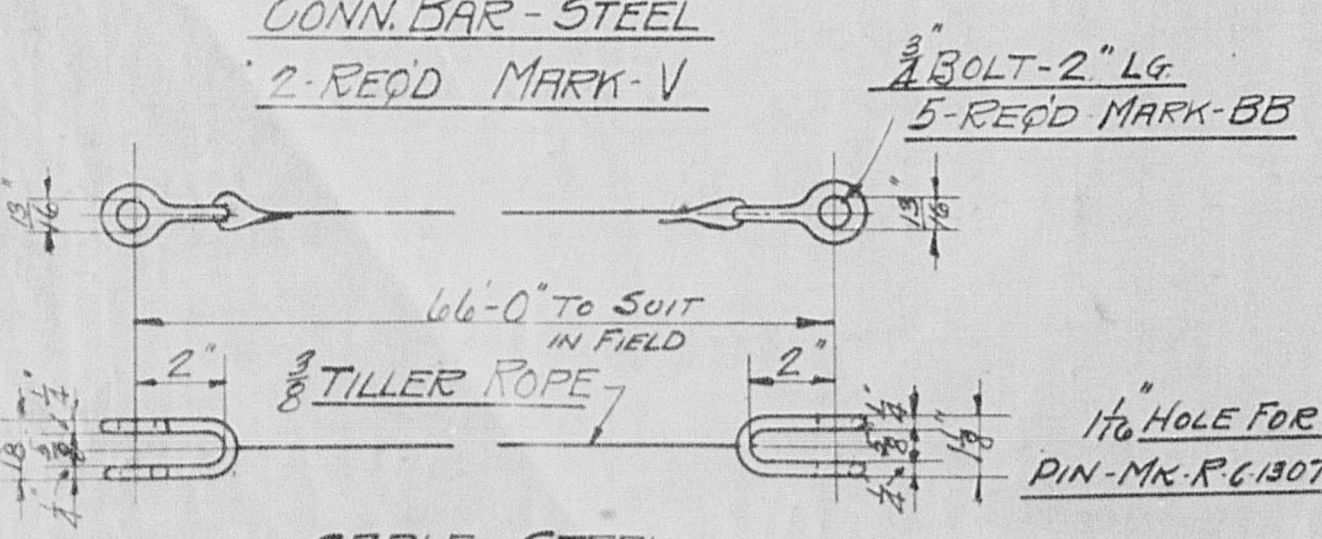
SUPPORT - STEEL
1-REQD MARK-U



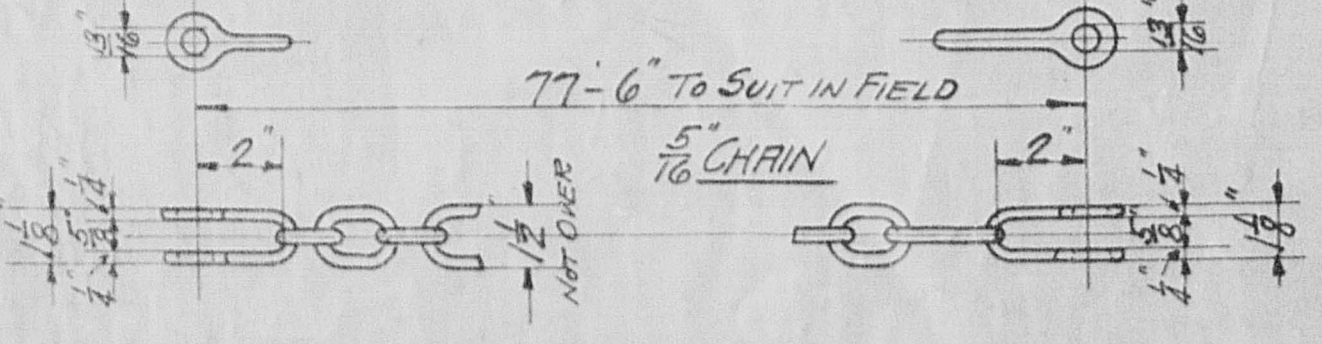
CONN. BAR - STEEL
2-REQD MARK-V



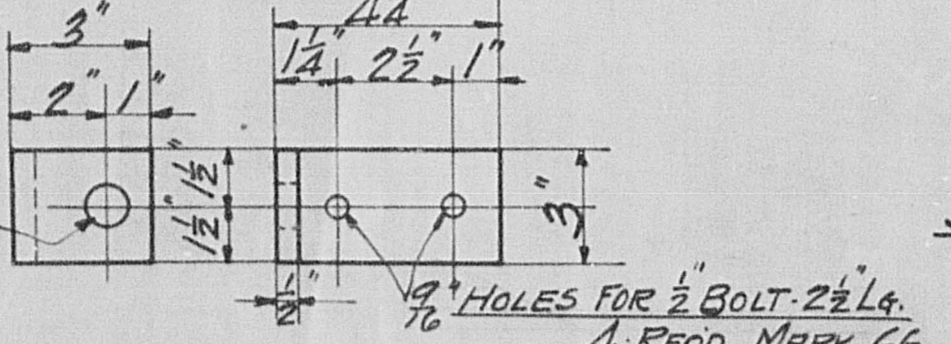
HANGER - STEEL
1-REQD COMPLETE MARK-R



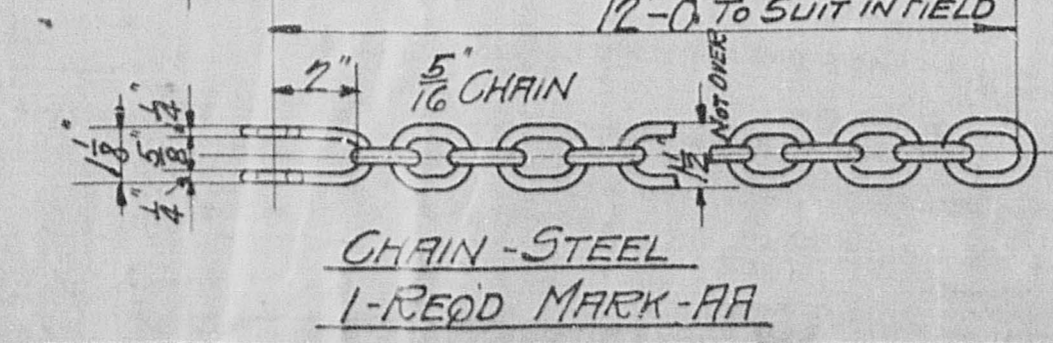
CABLE - STEEL
1-REQD MARK-Y



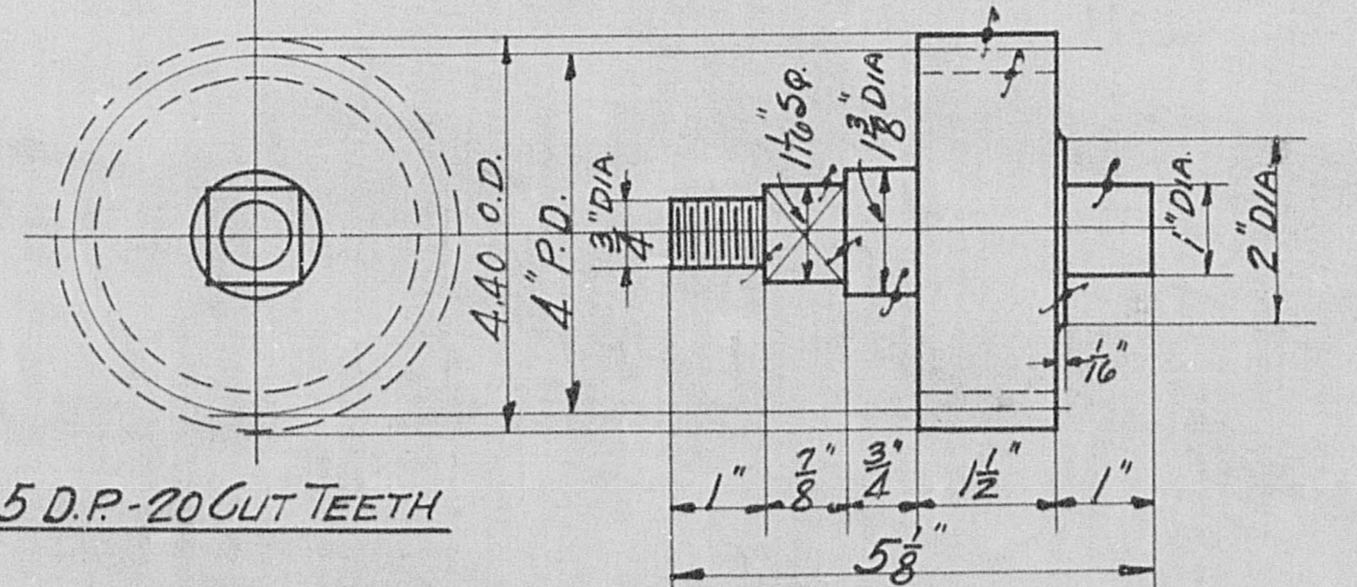
CHAIN - STEEL
1-REQD MARK-Z



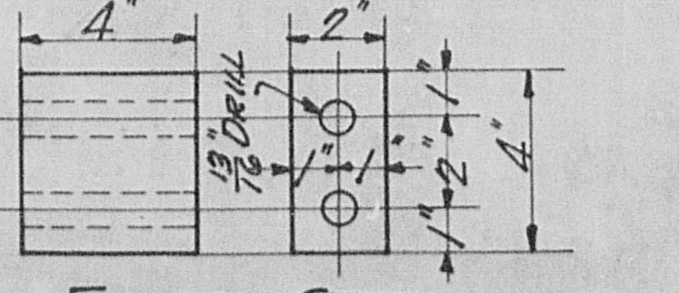
SUPPORT - STEEL
2-REQD MARK-T



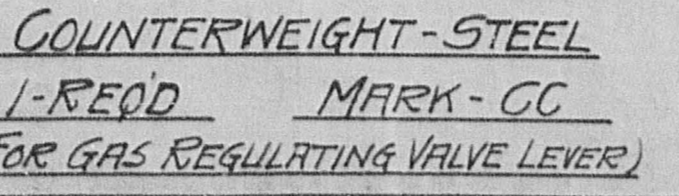
CHAIN - STEEL
1-REQD MARK-AA



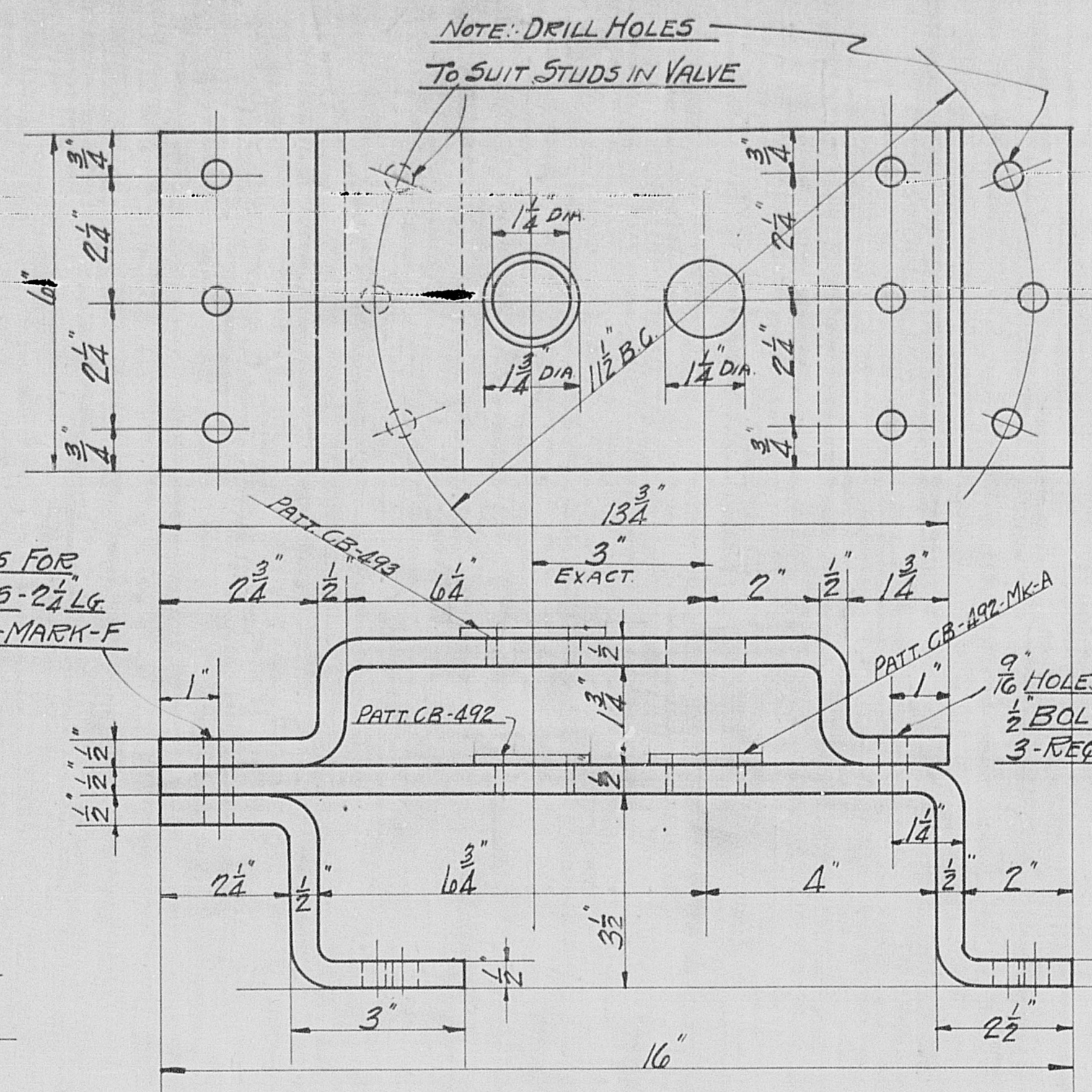
GEAR - STEEL
1-REQD MARK-N



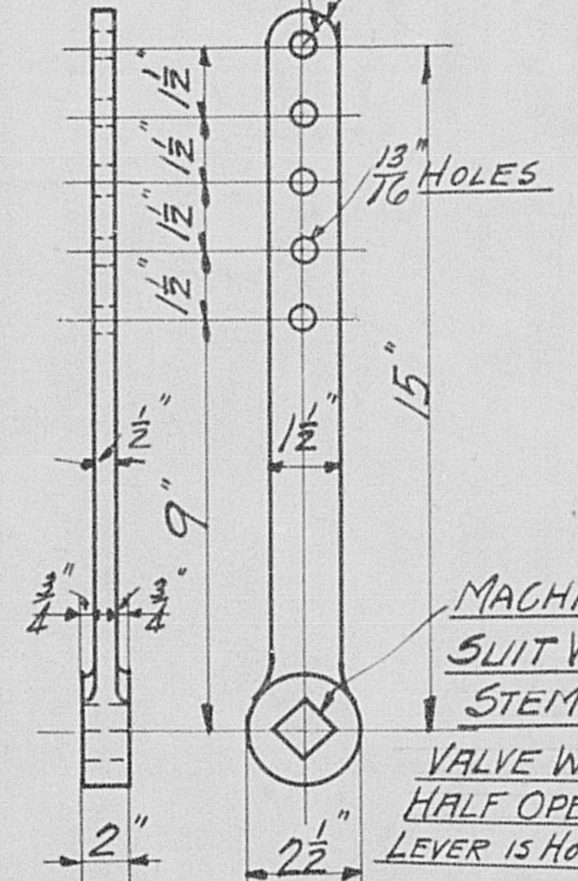
FILLER - STEEL
2-REQD MARK-X



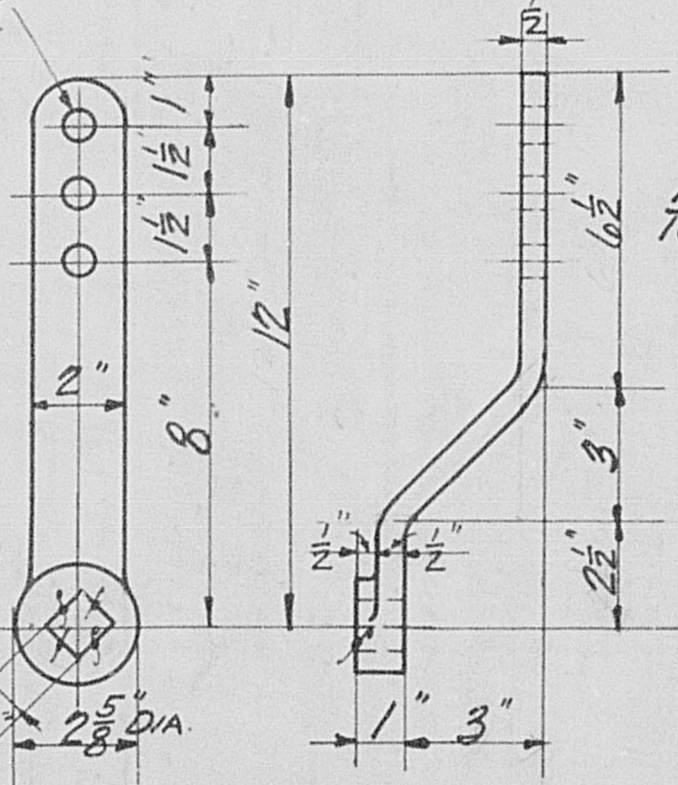
COUNTERWEIGHT - STEEL
1-REQD MARK-GC
(FOR GAS REGULATING VALVE LEVER)



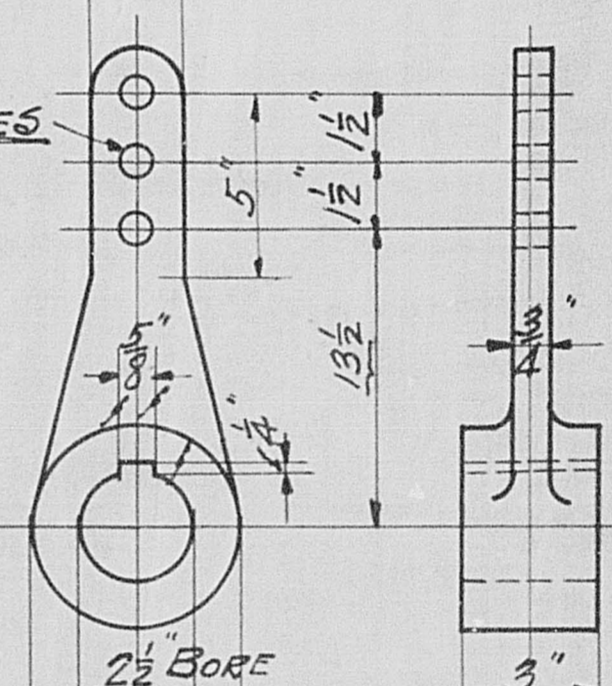
STAND - STEEL
1-REQD COMPLETE-MARK-D



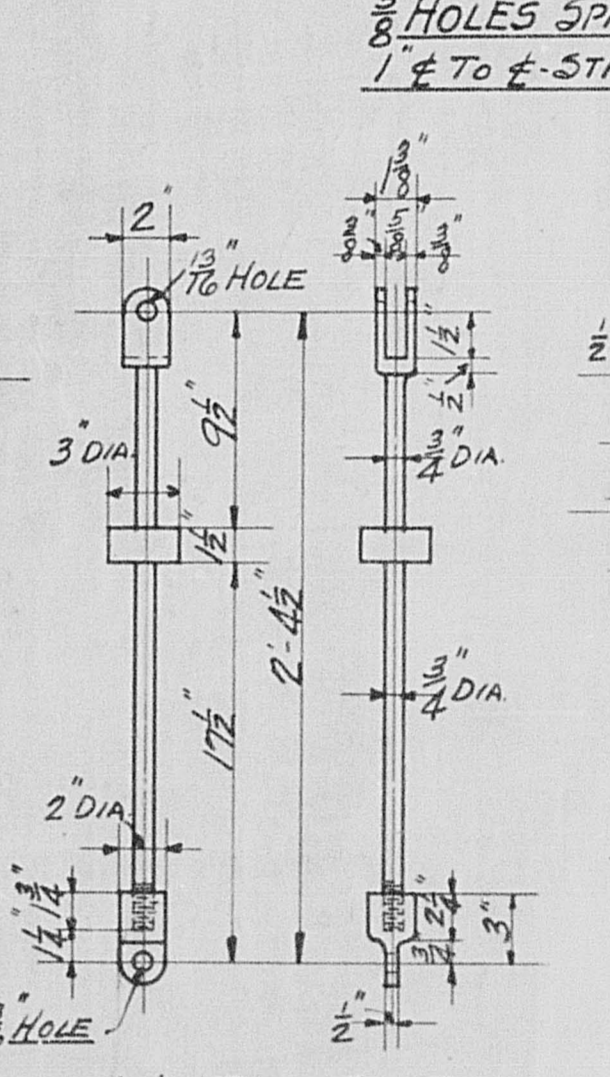
LEVER - STEEL
1-REQD MARK-K



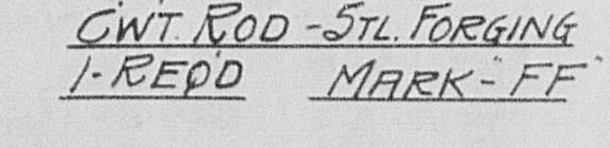
LEVER - STEEL
1-REQD MARK-J



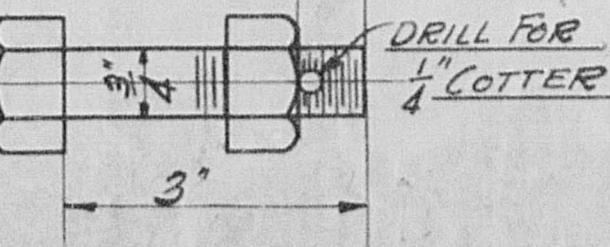
LEVER - STEEL
1-REQD MARK-H



QUADRANT - STEEL
1-REQD COMPLETE-MARK-G



CWT ROD - STL FORGING
1-REQD MARK-FF



PIN - STEEL
1-REQD - MK-DD

NOTE: DRILL HOLES
TO SUIT STUDS IN VALVE

9 HOLES FOR
1/2 BOLTS - 2 1/2 LG
3-REQD MARK-F

9 HOLES FOR
1/2 BOLTS - 1 3/4 LG
3-REQD MARK-E

1/8\"/>

MACHINE TO
SUIT VALVE
STEM SO THAT
VALVE WILL BE
HALF OPEN WHEN
LEVER IS HORIZONTAL

BORE & KEYSLOT
TO SUIT VALVE STEM

REFERENCE:
G-13077 - GEN ARRGT OF
VALVE & DOOR OPER MECH.
G-20943 - AIR & GAS VALVES OPERATING
MECHANISM - ARRGT & DETAILS

TUBE MILL - 1916 EXT.
#3-6 TO 16 LW BENDING FURNACE
DET. OF OPER MECH FOR GAS VALVES
TUBE
HASLUTIN

ERT ERT
FEB 22 1916
12 3/4 12 1/4
C-13238

NOTE: - ANY CHANGE MADE IN FIELD FROM DRAWING MUST BE REPORTED TO ENG DEPT.